

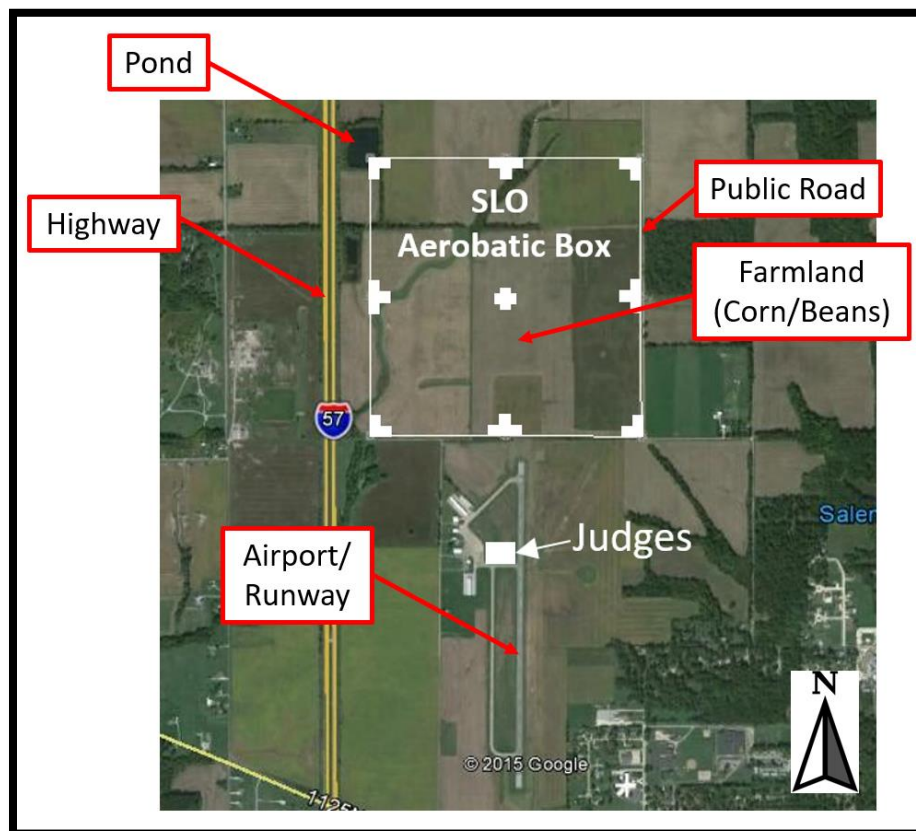
Rule Waiver Request for 2022 Salem Illinois

(Giles Henderson Memorial Challenge)

Aerobic Contest

8.3.1 Boundary Judging – Requires that boundaries are monitored for infringement. However, due to terrain and volunteer limitations, boundary judges may not be possible. The pond (northwest corner) and access through private farmland (southwest corner) make these locations impossible to monitor. It may be possible to monitor the northeast and southeast corners along the public road if sufficient volunteers are available. Historically, judges have used the presentation grade to reflect boundary deviations based on the low line flights.

7.1.1 Aerobic Box – Requires clear markings. Due to terrain limitations, it is not possible to place markers at all 9 planned locations. The northwest corner is in a pond and all but the eastern (3) and south center markers would require access through private farmland which will be planted with beans or corn. Past attempts to place markers in the farmed area have resulted in 4-wheel drive vehicles becoming stuck in mud, requiring a tractor to be recovered as well as crop damage. The highway (57) to the west provides an excellent alternative to the western box markers at a slightly greater distance than desired. The runway is nearly aligned with the center of the box and has served as south center marker (approach end to runway 18). The eastern markers can be placed along the public road. Center box is unmarked, although easily estimated by referring to the runway and visual reference to the northwest pond and the marked northeast corner.



of the box and has served as south center marker (approach end to runway 18). The eastern markers can be placed along the public road. Center box is unmarked, although easily estimated by referring to the runway and visual reference to the northwest pond and the marked northeast corner.

11. The Judging Line – While every effort to comply with all the rules of section 11 shall be made, the availability of judges and their distribution within competing categories may require deviations from several section 11 rules for the contest to proceed safely. One example of the safety benefit could be the avoidance of having to fly 3 Advanced/Unlimited flights in a single day due to some judges departing after the first contest day. A second example could be avoiding a disruption to the mental preparation of an Unlimited or Advanced pilot's flight (if he were tasked with being a judge and was not current/trained) if a pilot from a lower category could be substituted. Specific rule deviation waivers are provided below:

11.3.1 The Contest Director shall appoint judges who appear on the IAC Current Judges List.

Request approval to deviate from this rule only if insufficient current IAC judges are available to meet 3 judge minimum. Appointees would still be required to understand and follow the IAC rule book. The jury must uphold the rules.

11.3.1 Exception: Pilots who competed at the Advanced or Unlimited level in the current or previous contest year may be appointed as judges to fulfill the minimum judge requirement.

Request approval to deviate from this rule and appoint other knowledgeable persons/pilots besides Advanced or Unlimited pilots if necessary to meet 3 judge minimum. Appointees would still be required to understand and follow the IAC rule book. The jury must uphold the rules.

11.4.1 A minimum of three (3) and a maximum of ten (10) Grading Judges must be used for each category.

Request approval to deviate from this rule only if current IAC judges and alternates per 11.3.1 are unavailable to meet 3 judge minimum.