

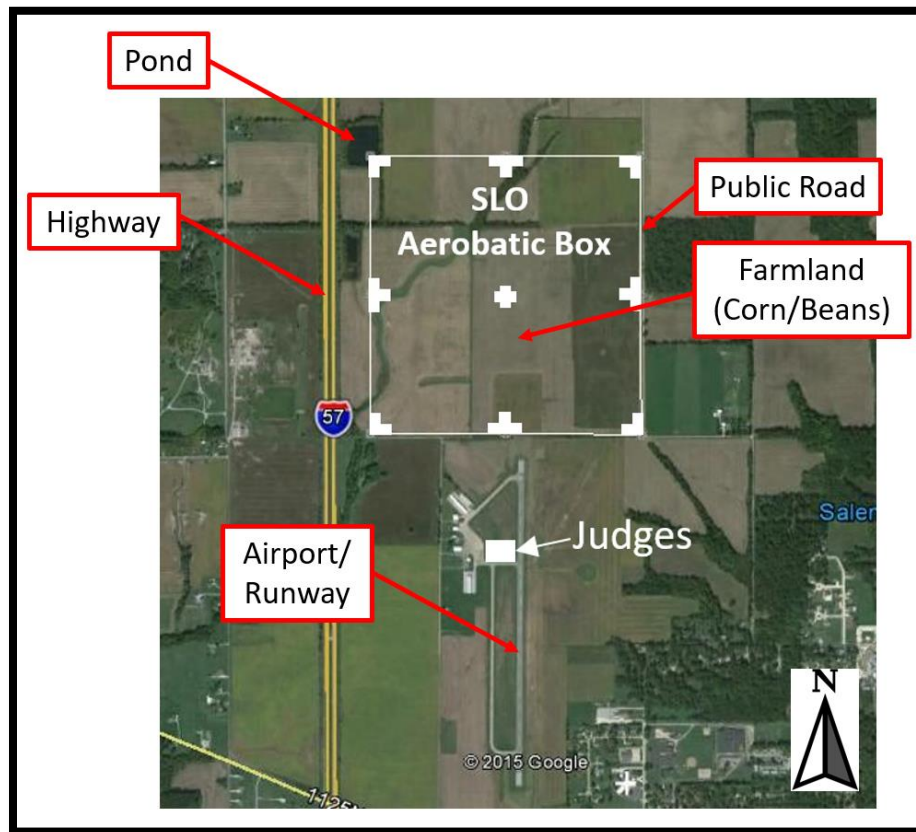
## Rule Waiver Request for 2021 Salem Illinois

### (Giles Henderson Memorial Challenge)

#### Aerobatic Contest

**1.16 Boundary and Deadline Judges** – Requires that boundaries are monitored for infringement. However, due to terrain and volunteer limitations, boundary judges may not be possible. The pond (northwest corner) and access through private farmland (southwest corner) make these locations impossible to monitor. It may be possible to monitor the northeast and southeast corners along the public road if sufficient volunteers are available. Historically, judges have used the presentation grade to reflect boundary deviations based on the low line flights.

**4.11 Aerobatic Box** – Requires clear markings. Due to terrain limitations, it is not possible to place markers at all 9 planned locations. The northwest corner is in a pond and all but the eastern (3) and south center markers would require access through private farmland which will be planted with beans or corn. Past attempts to place markers in the farmed area have resulted in 4-wheel drive vehicles becoming stuck in mud, requiring a tractor to be recovered as well as crop damage. The highway (57) to the west provides an excellent alternative to the western box markers at a slightly greater distance than desired. The runway is nearly aligned with the center of the box and has served as south center marker (approach end to runway 18). The eastern markers can be placed along the public road. Center box is unmarked, although easily estimated by referring to the runway and visual reference to the northwest pond and the marked northeast corner.



The runway is nearly aligned with the center of the box and has served as south center marker (approach end to runway 18). The eastern markers can be placed along the public road. Center box is unmarked, although easily estimated by referring to the runway and visual reference to the northwest pond and the marked northeast corner.