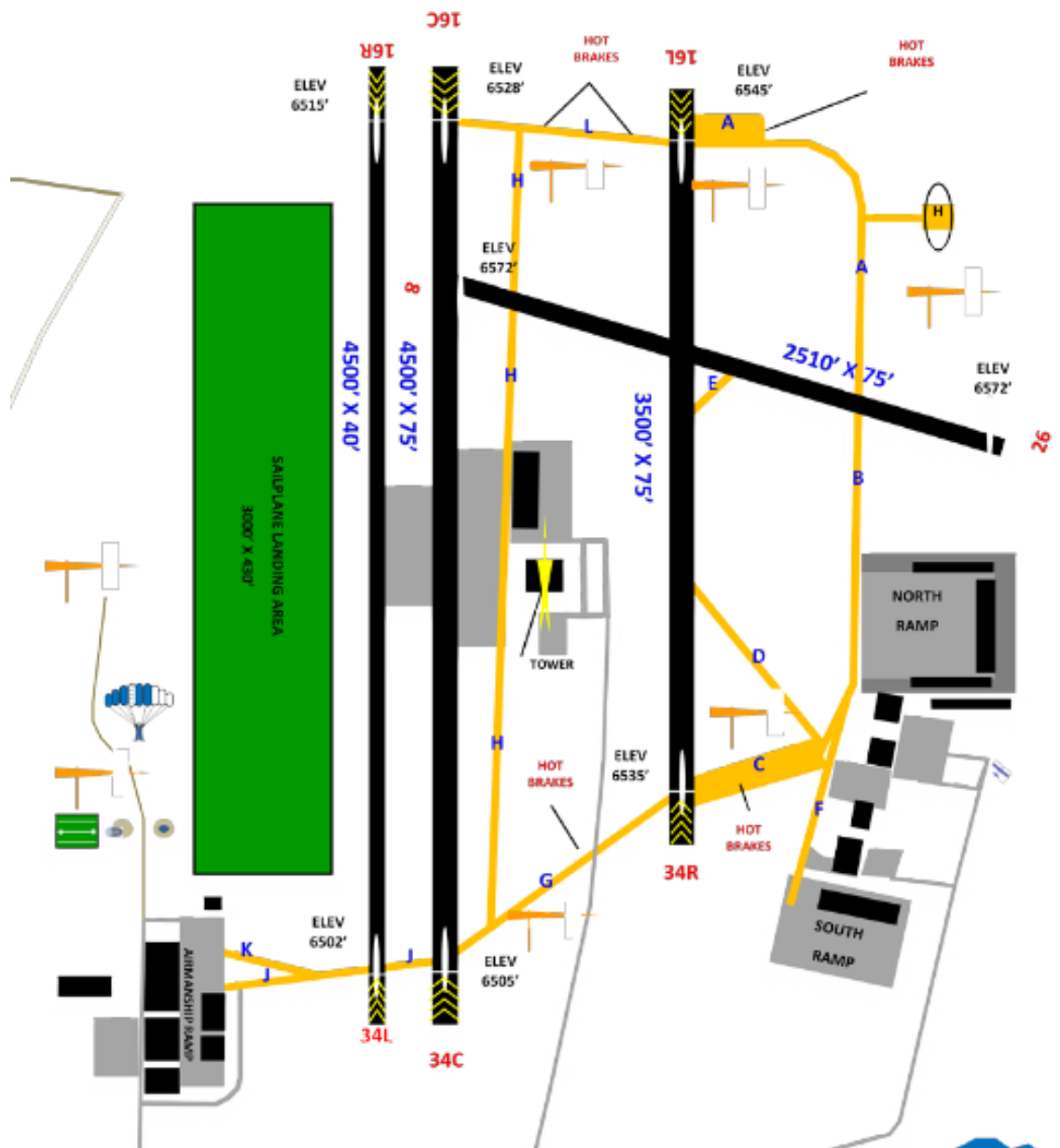


USAF Academy Airfield Diagram

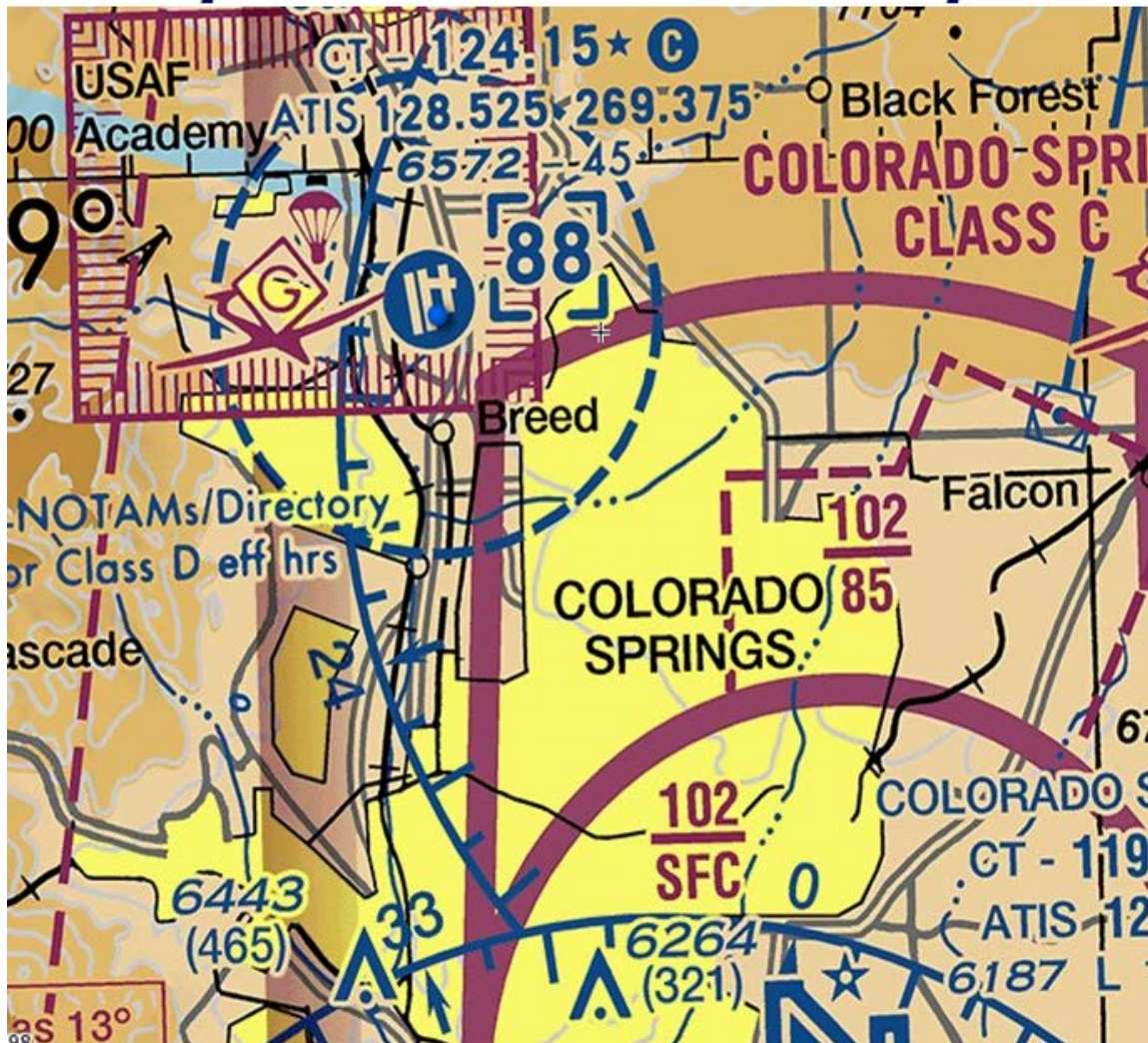


VHF Communications

ATIS:	128.525
Ground:	118.125
Academy Tower:	124.15
Skytrain:	134.10
Powered Box Frequency:	120.125
Glider Box Frequency:	127.15

N 38 ° - 58' 10" Latitude
W 104 ° - 48' 46" Longitude

Competition - Local Airspace



- Fly-in Starts at Fri, 21 Apr 0700 (or as pre coordinated), ATIS 128.525
- Primary operations on Rwy 34C/16C, Skytrain: 134.1
- Rwy 34R/16L available (if necessary) and Rwy 08/26 will only be used for Emergency/west wind recoveries, Tower: 124.15
- Taxi via Ground: 118.12, Clear to Staging Area and Shut Down
 - Register at Midfield Hangar, Information provided in welcome package
- Practice: 1000-1800 (Powered only, No Glider (with exception))
- Starter will Control Staging Area
- Skytrain Controls West/Center Rwy, Academy Tower Control East Rwy
- Box Master Sequences Practice Box Flow, Aircraft movement controlled by ATC
- Pedestrian movement at midfield will be controlled by the Contest Director, Starter, ECP and all 94 FTS personnel
- Normal Pattern to East at 1,000 AGL, Report Ranch, Downwind and base
- **Refuel for Saturday Start Procedures will be briefed in-depth at the 22 Apr, 0600 pilot briefing at Midfield**
 - Van pick-up from hotel @ 0530

Attachment 1

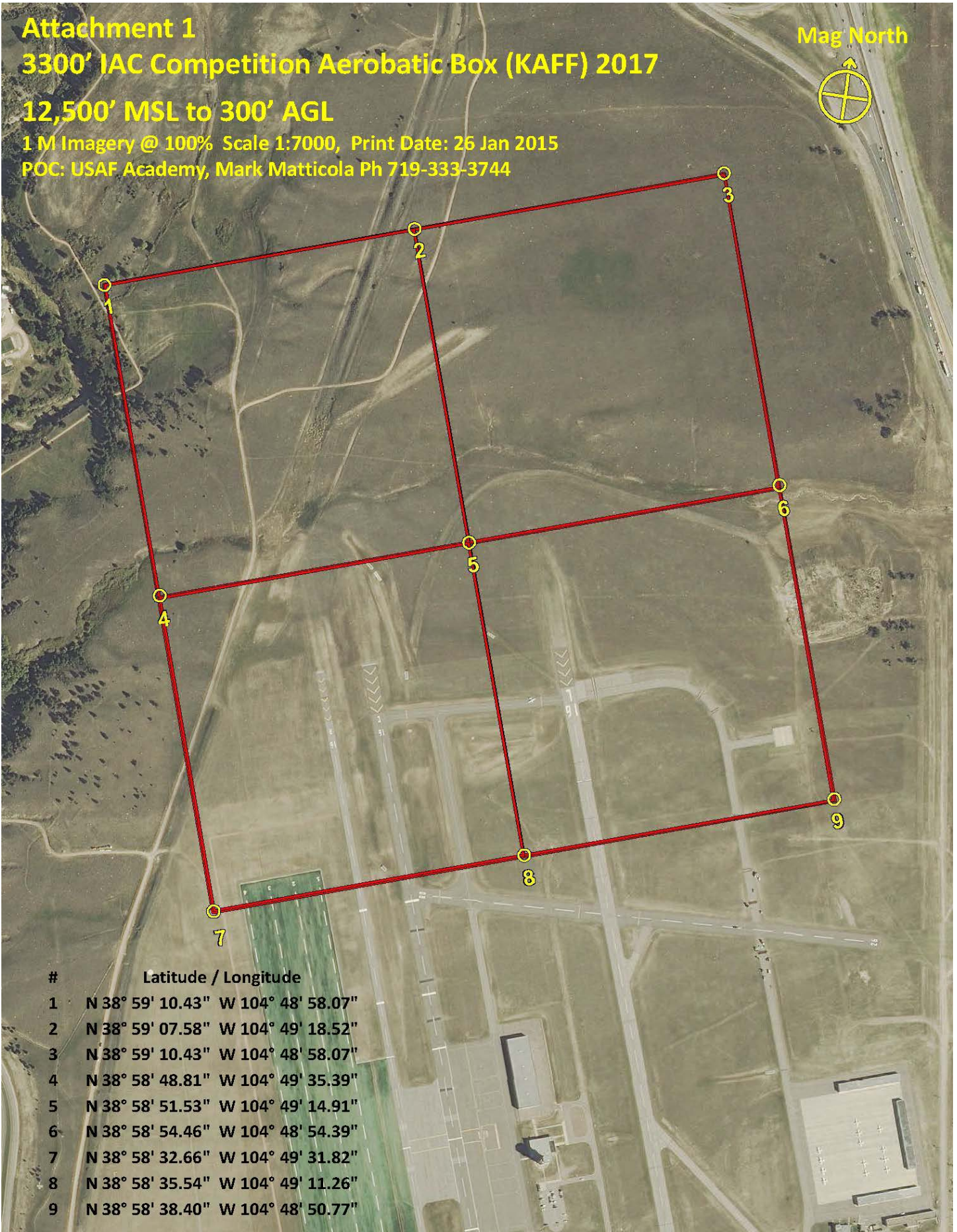
3300' IAC Competition Aerobatic Box (KAFF) 2017

12,500' MSL to 300' AGL

1 M Imagery @ 100% Scale 1:7000, Print Date: 26 Jan 2015

POC: USAF Academy, Mark Matticola Ph 719-333-3744

Mag North



#	Latitude / Longitude
1	N 38° 59' 10.43" W 104° 48' 58.07"
2	N 38° 59' 07.58" W 104° 49' 18.52"
3	N 38° 59' 10.43" W 104° 48' 58.07"
4	N 38° 58' 48.81" W 104° 49' 35.39"
5	N 38° 58' 51.53" W 104° 49' 14.91"
6	N 38° 58' 54.46" W 104° 48' 54.39"
7	N 38° 58' 32.66" W 104° 49' 31.82"
8	N 38° 58' 35.54" W 104° 49' 11.26"
9	N 38° 58' 38.40" W 104° 48' 50.77"

3300' IAC Competition Acro Box With East Acros Areas (KAFF) 2017

1 M Imagery @ 30% Scale 1: 23,333, Print Date: 28 Jan 2015
POC: USAF Academy, Mark Matticola Ph 719-333-3744

Attachment 2

Mag North



Aerobatic Spill out Box Boundary in Yellow
12,500' MSL to 1500' AGL

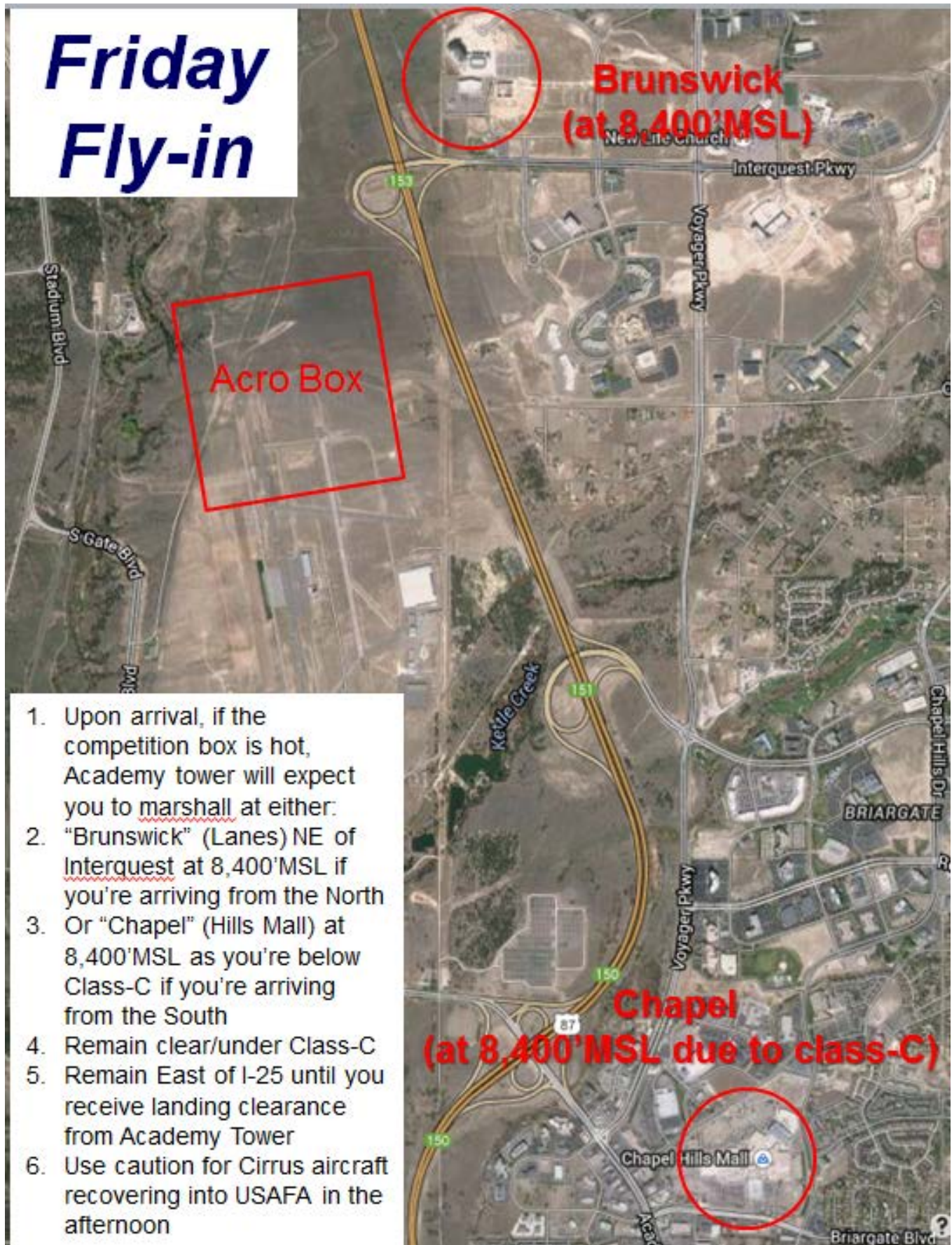
Friday Fly-in

Acro Box

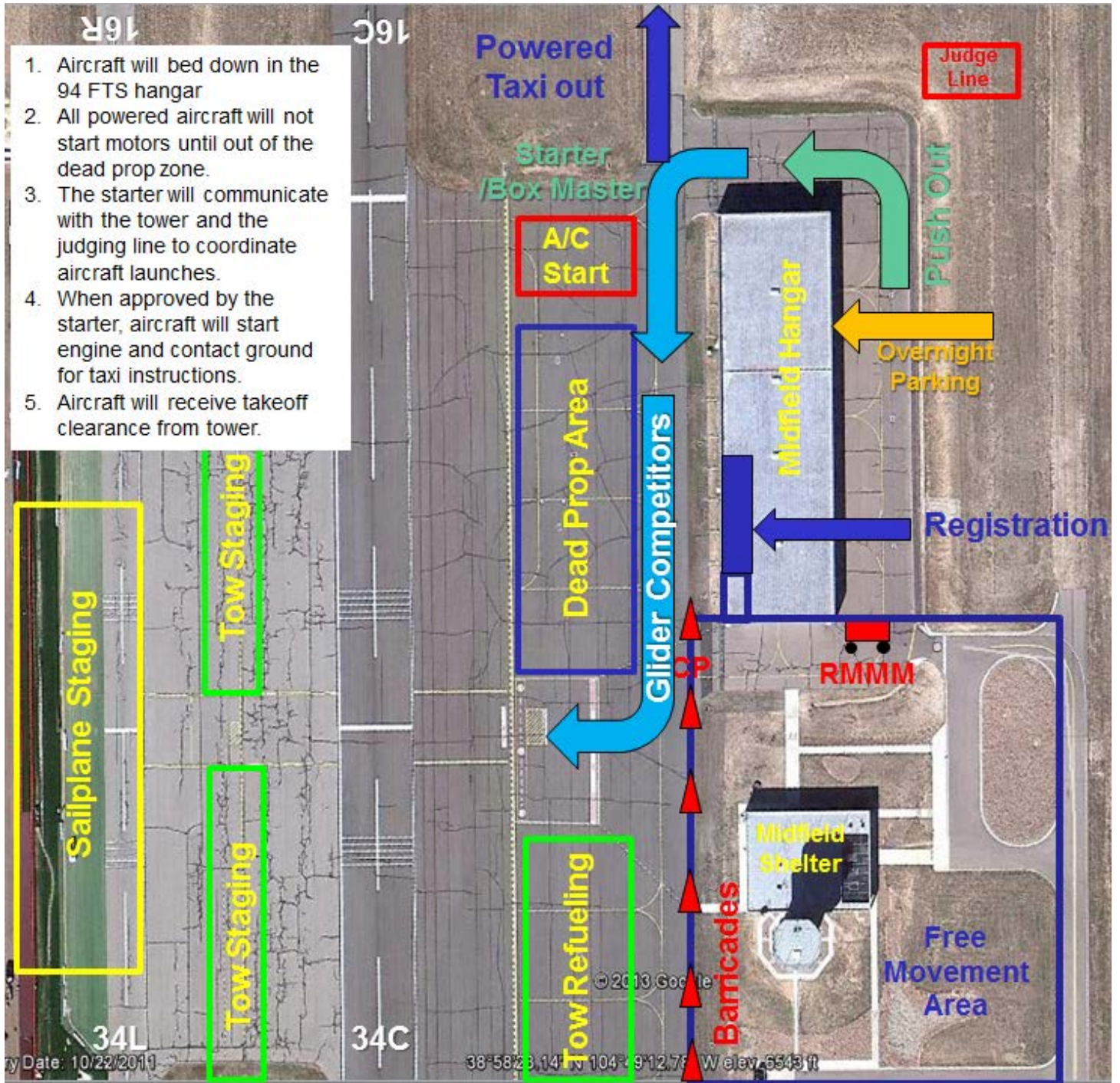
Brunswick
(at 8,400' MSL)

Chapel
(at 8,400' MSL due to class-C)

1. Upon arrival, if the competition box is hot, Academy tower will expect you to marshall at either:
2. "Brunswick" (Lanes) NE of Interquest at 8,400' MSL if you're arriving from the North
3. Or "Chapel" (Hills Mall) at 8,400' MSL as you're below Class-C if you're arriving from the South
4. Remain clear/under Class-C
5. Remain East of I-25 until you receive landing clearance from Academy Tower
6. Use caution for Cirrus aircraft recovering into USAFA in the afternoon



1. Aircraft will bed down in the 94 FTS hangar
2. All powered aircraft will not start motors until out of the dead prop zone.
3. The starter will communicate with the tower and the judging line to coordinate aircraft launches.
4. When approved by the starter, aircraft will start engine and contact ground for taxi instructions.
5. Aircraft will receive takeoff clearance from tower.



ty Date: 10/22/2011

©2013 Google 38°58'23.14" N 104° 9'12.7" W elev. 6543 ft

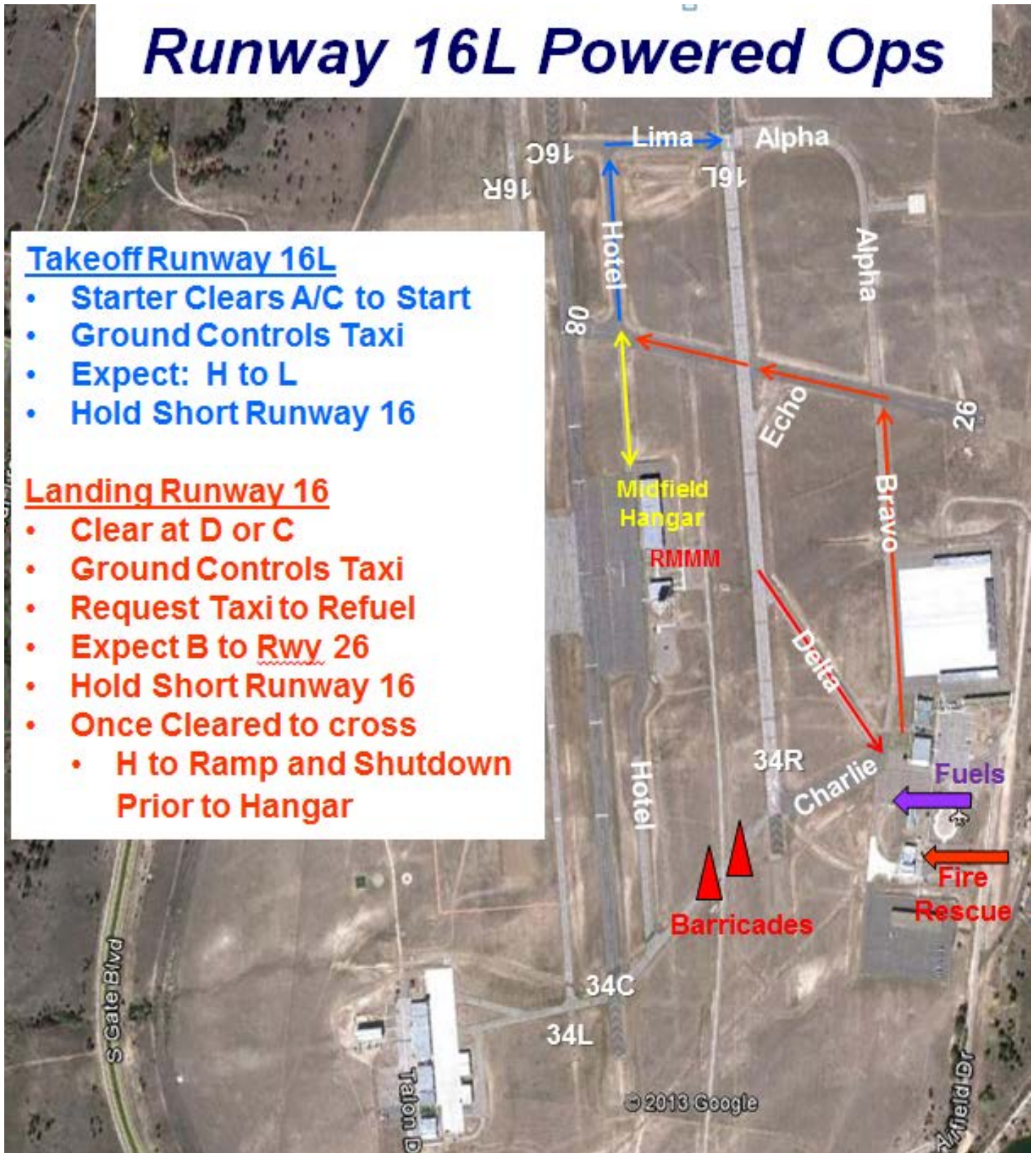
Runway 16L Powered Ops

Takeoff Runway 16L

- Starter Clears A/C to Start
- Ground Controls Taxi
- Expect: H to L
- Hold Short Runway 16

Landing Runway 16

- Clear at D or C
- Ground Controls Taxi
- Request Taxi to Refuel
- Expect B to Rwy 26
- Hold Short Runway 16
- Once Cleared to cross
 - H to Ramp and Shutdown Prior to Hangar



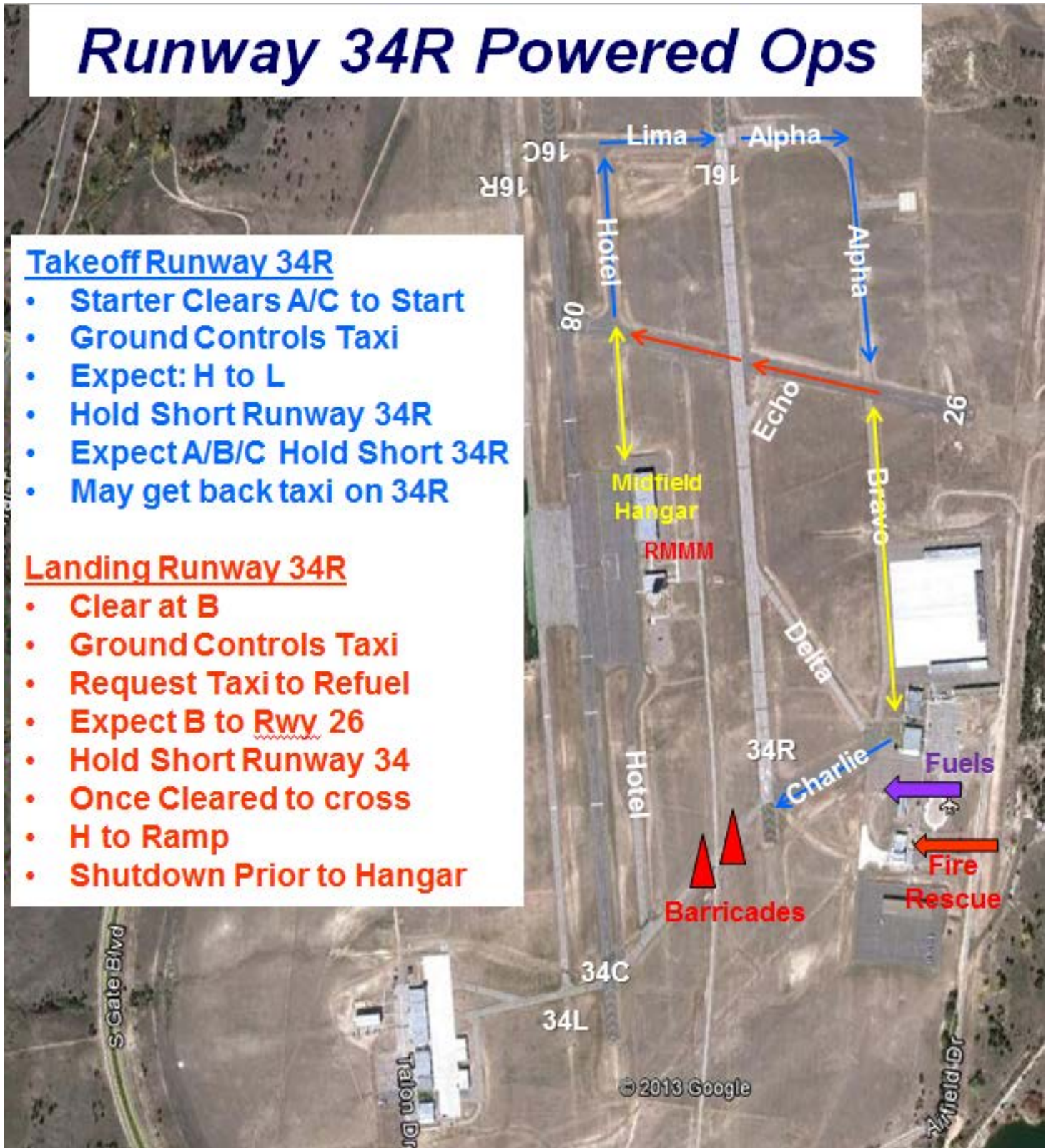
Runway 34R Powered Ops

Takeoff Runway 34R

- Starter Clears A/C to Start
- Ground Controls Taxi
- Expect: H to L
- Hold Short Runway 34R
- Expect A/B/C Hold Short 34R
- May get back taxi on 34R

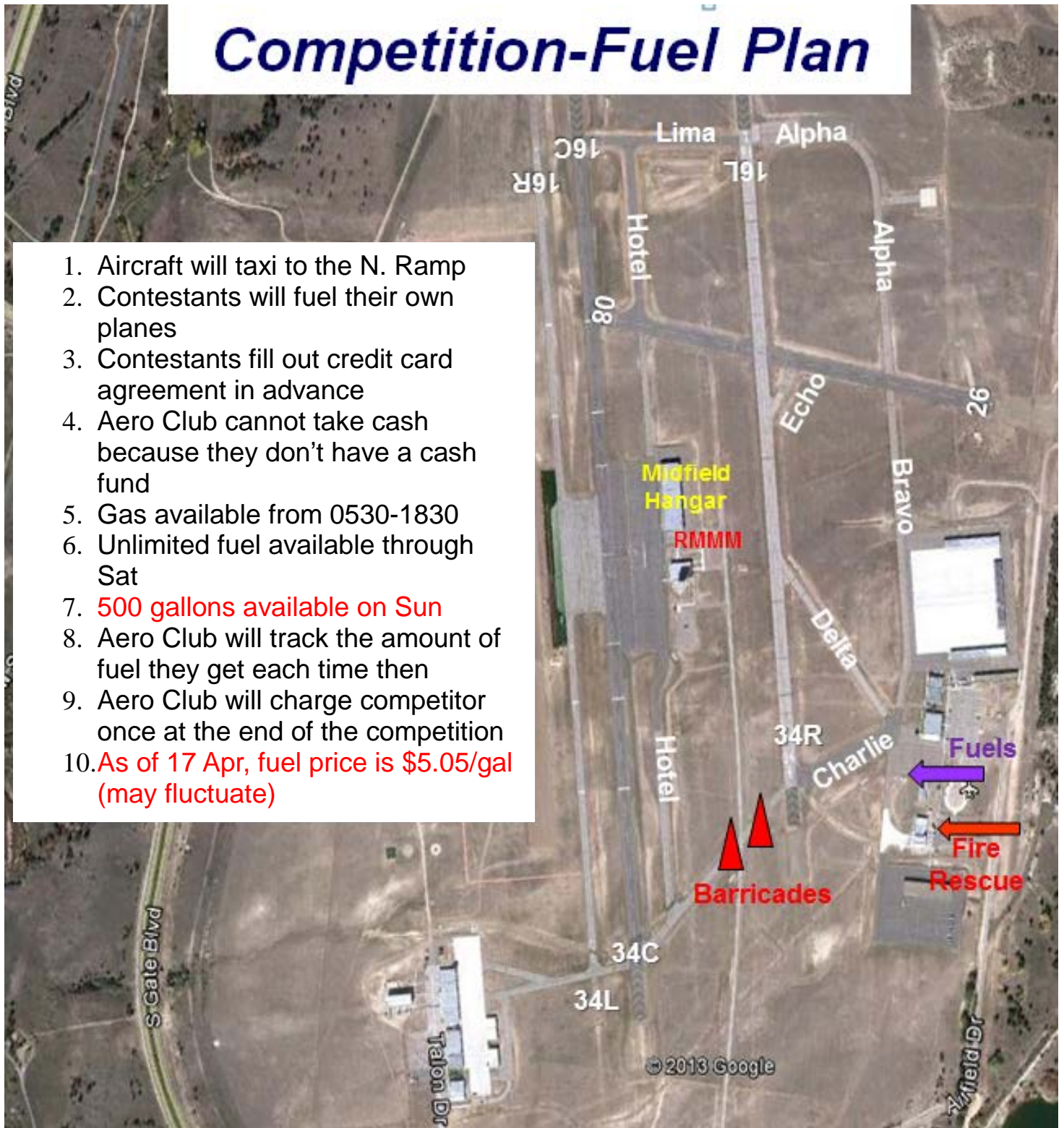
Landing Runway 34R

- Clear at B
- Ground Controls Taxi
- Request Taxi to Refuel
- Expect B to Rwy 26
- Hold Short Runway 34
- Once Cleared to cross
- H to Ramp
- Shutdown Prior to Hangar



Competition-Fuel Plan

1. Aircraft will taxi to the N. Ramp
2. Contestants will fuel their own planes
3. Contestants fill out credit card agreement in advance
4. Aero Club cannot take cash because they don't have a cash fund
5. Gas available from 0530-1830
6. Unlimited fuel available through Sat
7. 500 gallons available on Sun
8. Aero Club will track the amount of fuel they get each time then
9. Aero Club will charge competitor once at the end of the competition
10. As of 17 Apr, fuel price is \$5.05/gal (may fluctuate)



Competition - Comm Plan

- Clearance Req'd from Academy Tower for T/O
- **Aircraft will not be cleared to takeoff or land under a hot acro box on practice day. Powered carry extra fuel for 10 min hold.**
- Tower will clear A/C to turn out of traffic and contact Chief Judge (Box Master on Practice Day). Report to Chief Judge by First Name
- Chief Judge directs A/C to Secondary Holding. Primary when empty. Then box.
- Powered A/C reports clear of box when <8,000 MSL and East of I-25 (Glider standard)
- Chief Judge acknowledges and directs A/C to contact tower
- Powered A/C contacts tower at 7,500 MSL over "Ranch" heading EAST
 - "Ranch" is identified as intersection of Old Ranch Rd and Voyager Rd (Hwy 83) also has a Red House at Intx
- Tower Acknowledges and directs A/C to report downwind for appropriate runway
- A/C reports downwind and base
- Tower Clears A/C for Landing. A/C acknowledges Landing Clearance and Lands
- Chief Judge will report to Tower when the box is hot and when it is cold
- Tower may clear next A/C for T/O once box is handed back to tower
(Intermediate and Advanced Categories)



Competition – Box Holding



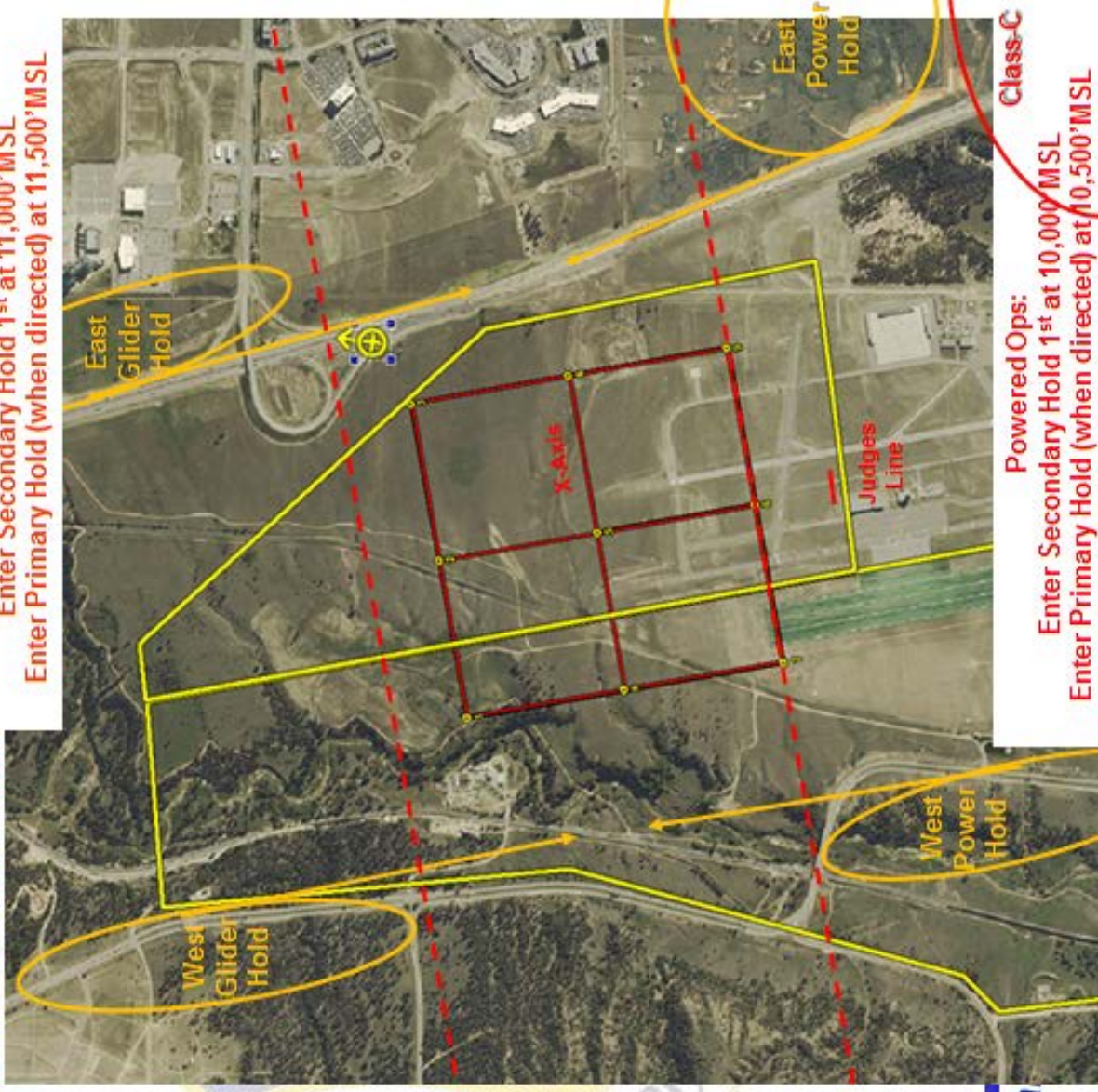
Develop America's Airmen Today ..

- All Aerobatics will take place in the red box
- The yellow container is a spill-out area
- Different glider and power hold patterns are depicted for traffic de-confliction and better competition flow into the box
- East hold patterns are used if the winds are from the West and the routine starts East to West (and vice versa for West patterns)

Glider Ops:

Enter Secondary Hold 1st at 11,000' MSL

Enter Primary Hold (when directed) at 11,500' MSL



Powered Ops:

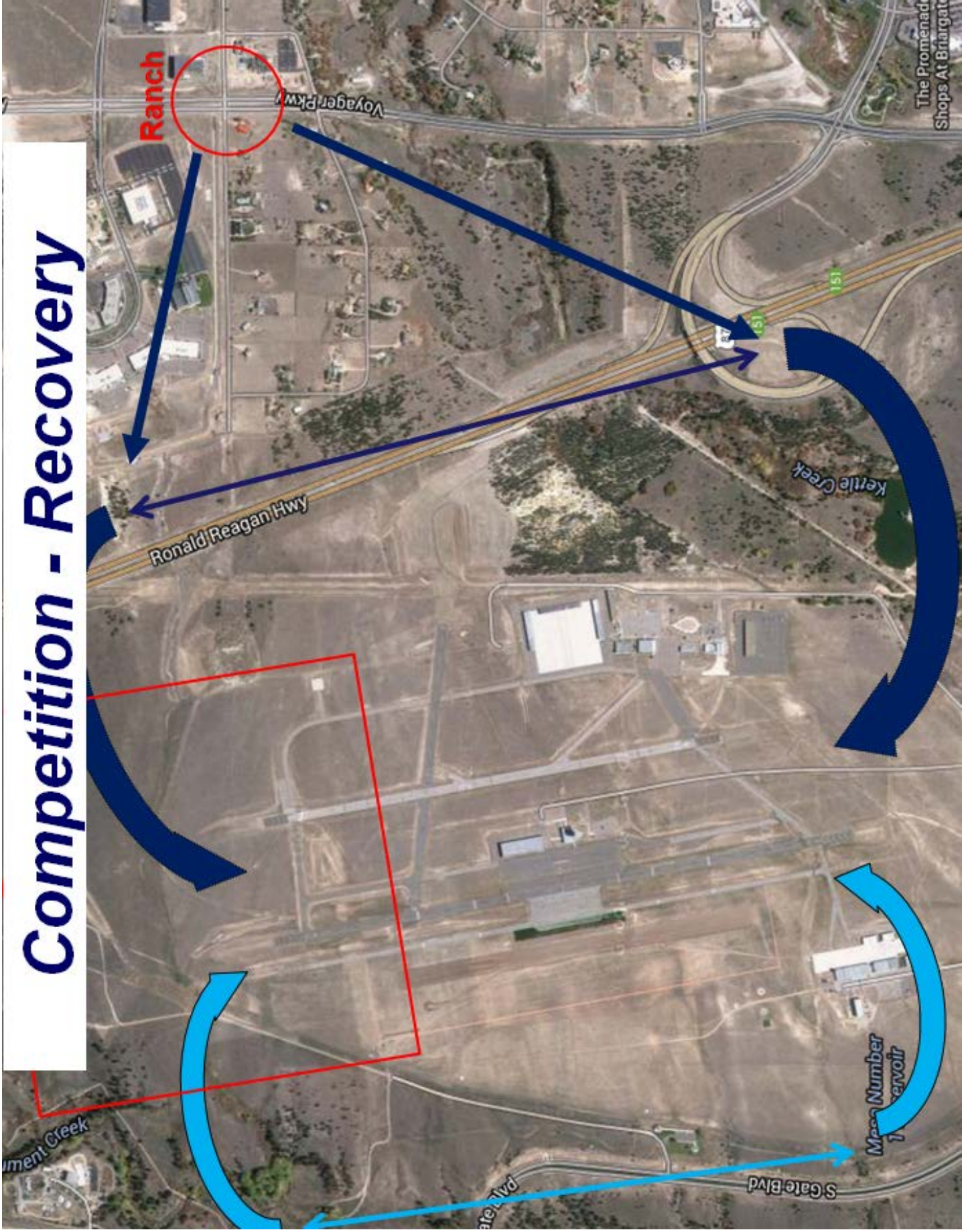
Enter Secondary Hold 1st at 10,000' MSL

Enter Primary Hold (when directed) at 10,500' MSL

Class-C

Airman

Competition - Recovery



Questions, Comments, Concerns? Please contact...

-Entry Access List Issues: Captain Roberto Benitez (262-352-1186)

-Contest/Chief Judge Issues: Mark Matticola (719-440-1965)

DJ Molney (303-619-4814)

-None of the above/other gripes: C2C Kaitlyn Brown (850-217-1079)

C1C Taylor Marshall (970-297-8720)

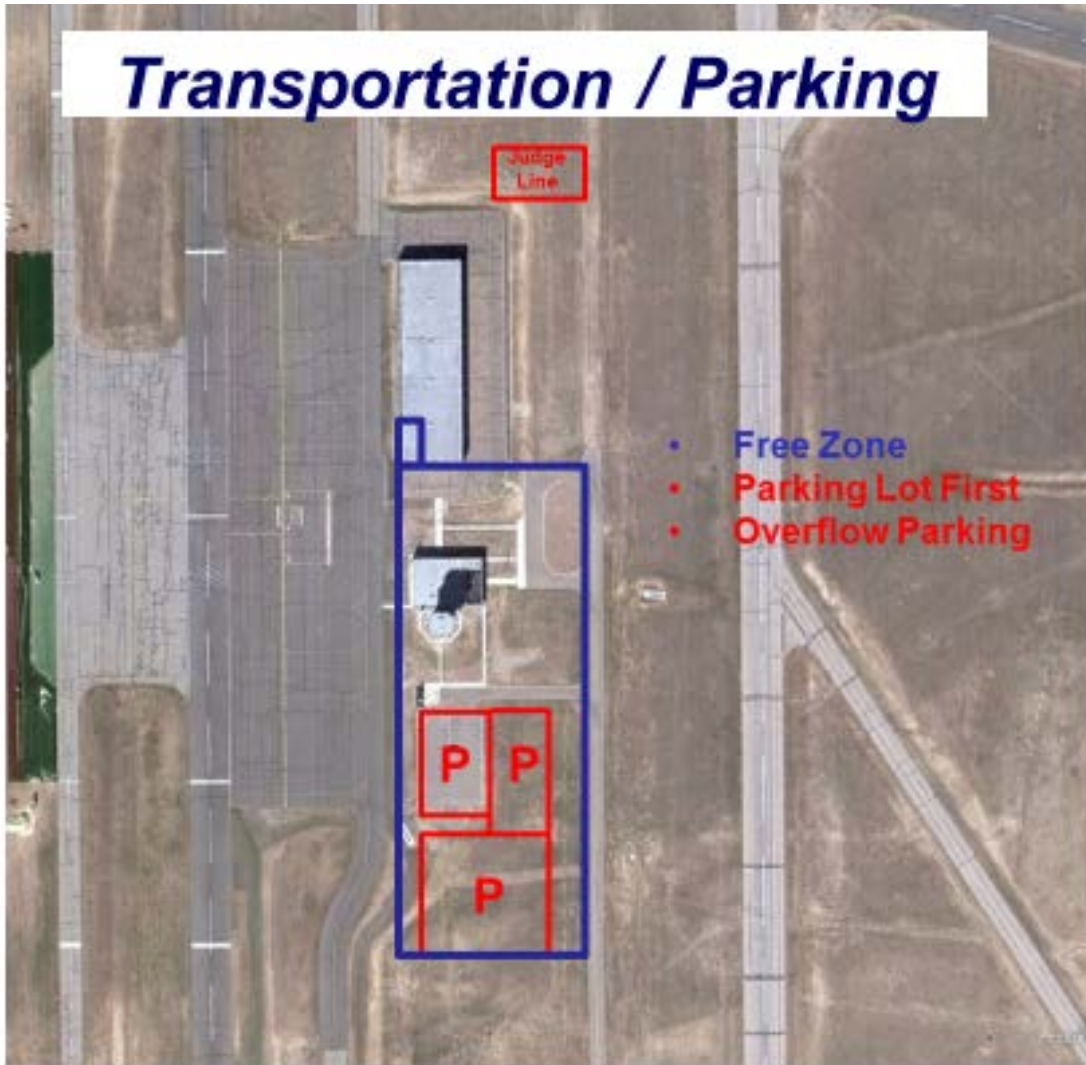
Miscellaneous Information

-Banquet: Saturday Evening, Apr 22 @ 1900 (Eisenhower Golf Course)

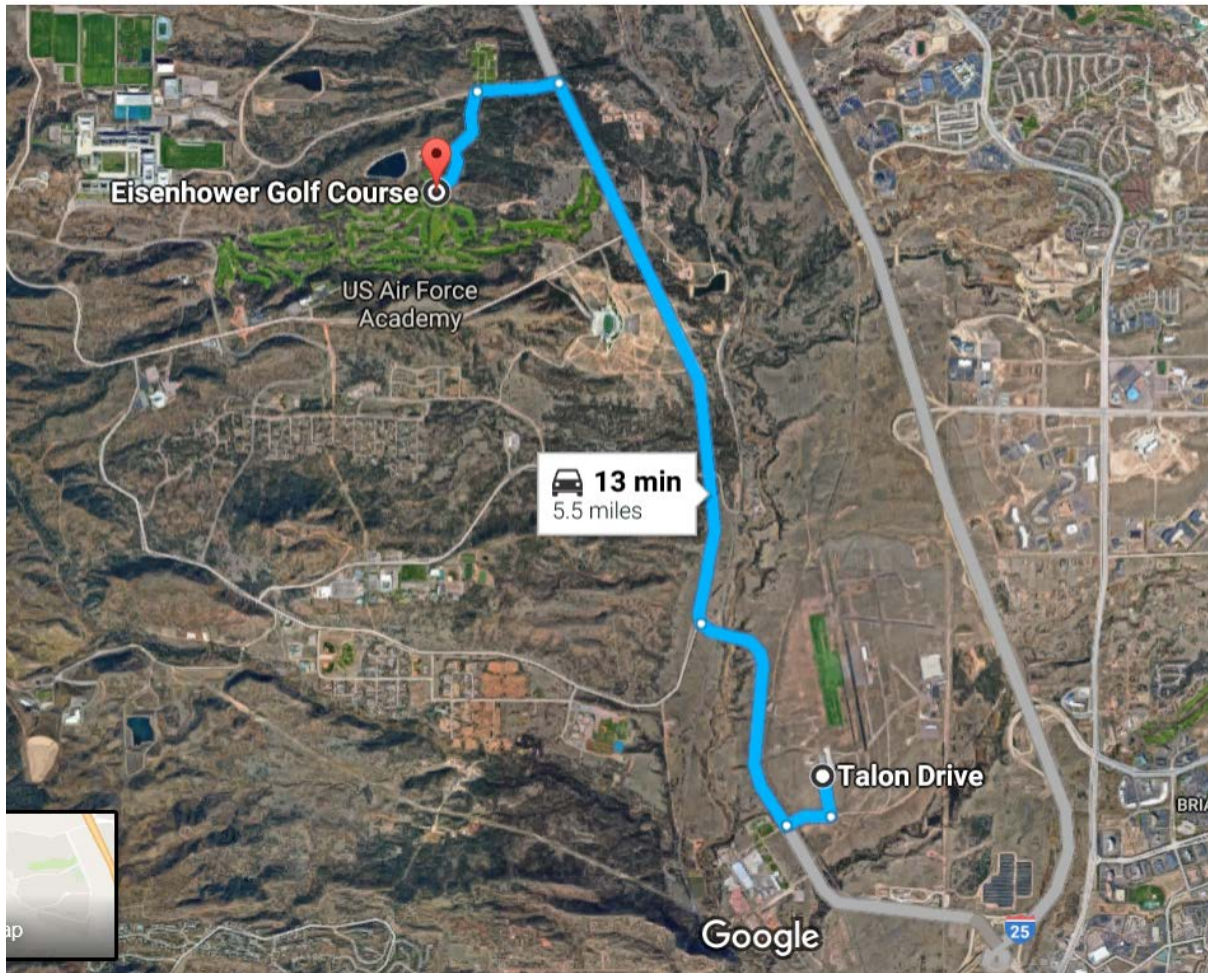
-Directions to Airfield (See Below)



Transportation / Parking



- Free Zone
- Parking Lot First
- Overflow Parking



Directions to Eisenhower Golf Course

- Enter through South Gate and stay straight on South Gate Blvd until you pass the football stadium
- Take a left onto Parade Loop
- Take next left directly across from the Cemetery onto the golf course drive