



Construction of Boundary Judge Sighting Devices

On the following page are a couple of examples of boundary sighting devices that are used by boundary judges to call "outs". The accuracy of these devices is extremely important as penalties can often decide the outcome of a contest.

The box should be surveyed with stakes at the exact corners of the buffer zone of the box. Sighting devices and the boundary judges are always located at the corner of the buffer zone, not the corner of the box.

Once you have located the corners (usually only two since only two boundary judges are usually used—one diagonal from the other), the surveyors must also put out stakes that you can sight on with the devices themselves so you can properly align them with the edge of the box.

The ideal situation is to be able to "see" the other corners of the buffer zone since if the alignment of the devices is done off of those corners, it is the most accurate. Most terrain features do not permit this, however, and the surveyor must lay down some stakes along the edge of the buffer zone for you to align the sighting devices.

IAC favors sighting devices that use ropes or strings, as they are very accurate. Two wires or strings must always be provided for each edge of the zone. The boundary judge uses both as a sight. He or she lines them up and when the entire aircraft goes outside these wires or strings, an "out" is called into the chief judge. If these devices are left out overnight the string may "sag". Check the device every day of the contest to make sure they are in alignment with the surveyor's stakes.

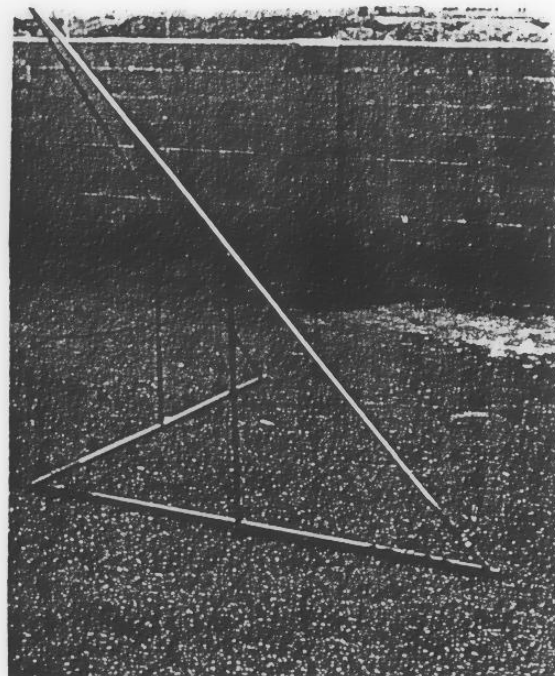
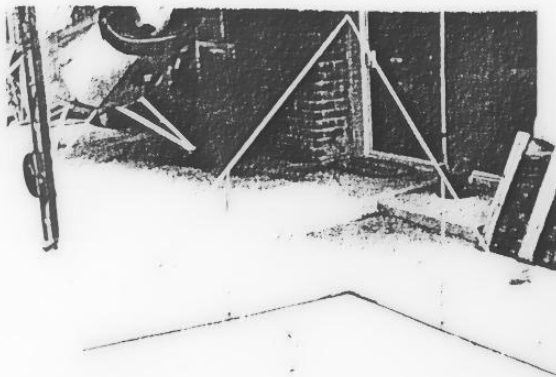
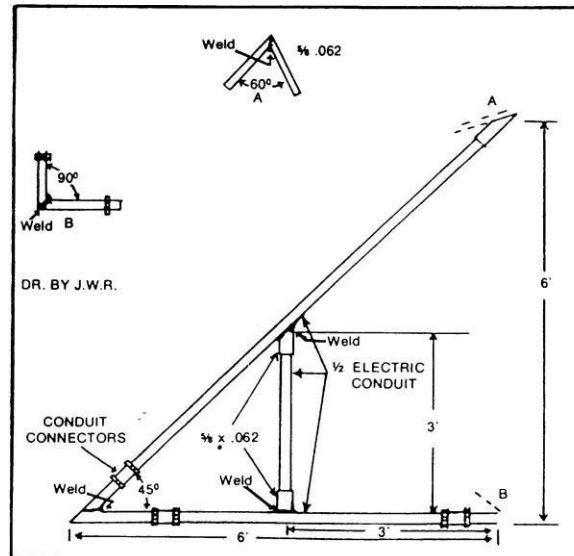
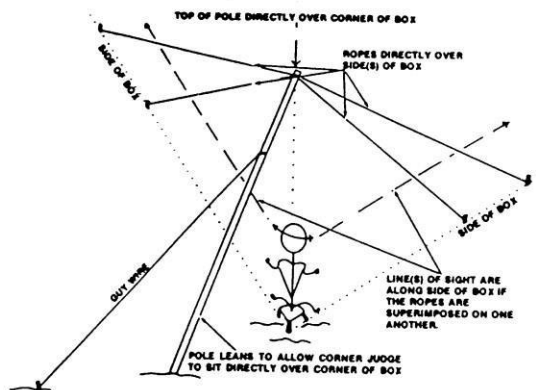
Sighting devices made of conduit or tubing are not always as accurate as using two strings to sight on, since lateral movement is possible on the part of the boundary judge. When using the device pictured below, made of tubing, the vertical leg must also be used by the boundary judge so he or she can make sure they are "sighting" on the device properly.

To review:

- Use two strings/wires to sight on.
- Boundary sighting devices are always located on the corners of the buffer zone - not the aerobatic box.
- Check alignment of wire/string devices every day against the surveyor's stakes.
- Lastly and most importantly, put someone in charge of the devices and the boundary judges themselves and make sure they are properly trained in the use of the sights, the radio, the IAC "Official Contest Rules" regarding boundary infringements, and other details.



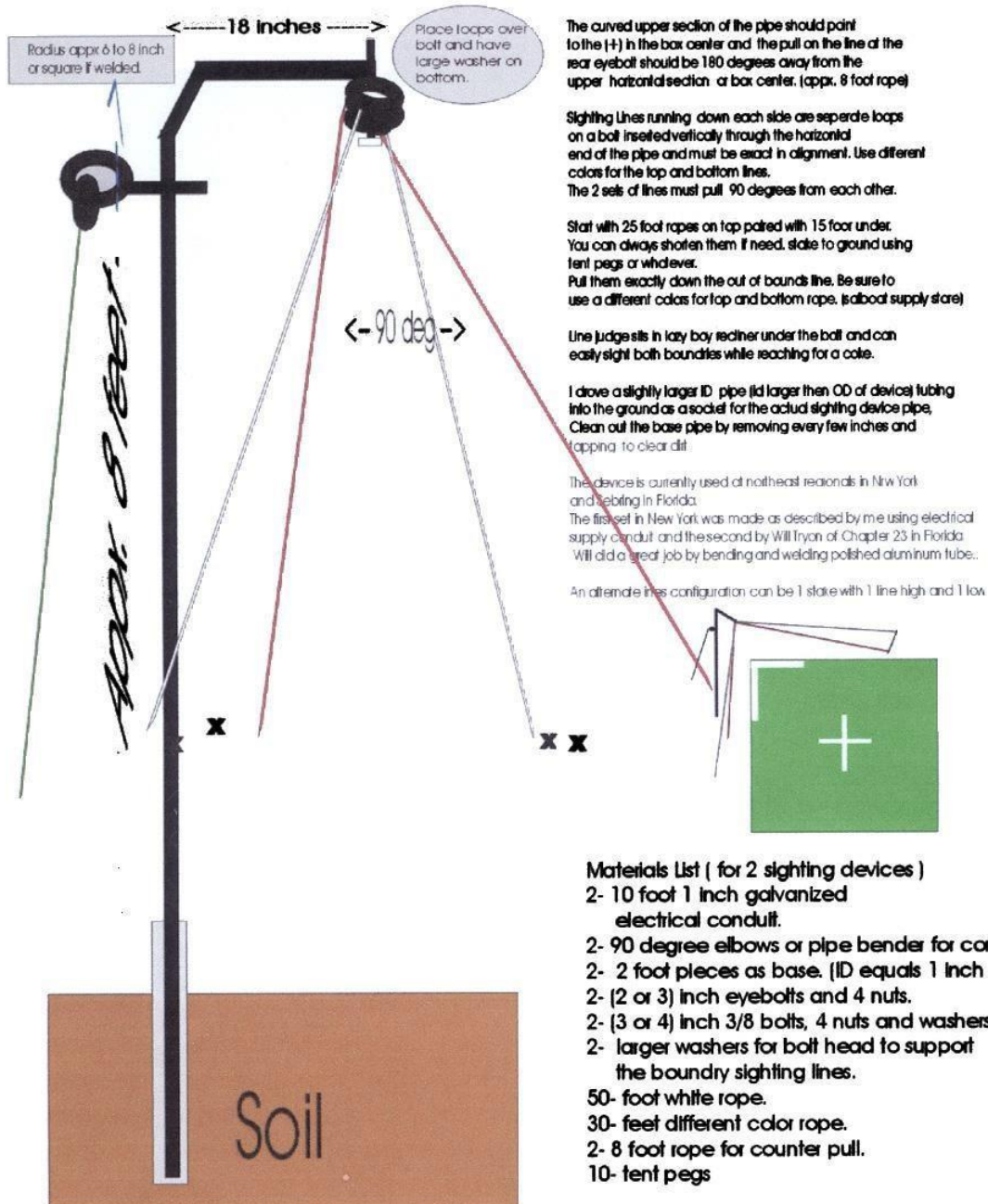
Construction of Boundary Judge Sighting Devices





Construction of Boundary Judge Sighting Devices

BOUNDRY SIGHTING DEVICE



Submitted by Tom Murphy Chapter 23, Pompano Fl